



# CORPORATE PROFILE



***ELECTRO MECHANICAL SOLUTIONS***

TURN YOUR IDEAS INTO TANGIBLE INNOVATIONS







# INDEX

About Electro Mechanical Solutions (EMS).....	1-2
Our Services .....	3
Firefighting System.....	4-5
Water Sprinkler System.....	6
FOGTEC High Pressure Water Mist System.....	7-8
Water Pumps.....	9
Firefighting Pumps.....	10
WILKINS Control valves.....	11
Zurn Drainage Solutions .....	12
Insulations.....	13
Grooved & Press Fittings .....	14
Valves.....	15
Data Center Facility Solutions .....	16
Certificates.....	17-20
Elite Customer.....	21
Our Partners.....	22
Our Projects.....	23-35

## About Electro Mechanical Solutions (EMS)



**EMS** is a well-balanced Electro Mechanical and engineering-based solutions provider. Our strengths are derived from our proven ability to leverage our most valuable assets - our people, suppliers, our technology, our capabilities and our unrelenting focus on creating value for our customers. Throughout our history, we have been a wellspring of innovation, creativity and technological advances. And I am proud to say, Electro Mechanical Solutions plans to continue its heritage of leadership in the markets we serve and, in the communities, where we live and work. Electro Mechanical Solutions have successfully transitioned to become trusted Electro Mechanical Solution Provider in Middle East. In **EMS**, we anticipate and lead, we do not wait and respond. We have a remarkable approach for Innovation; using holistic approach to understand customers; exploring technology around the world to design and tailor the perfect solution; elevating organization knowledge to successfully implement and operate customer solution.

It is satisfying to know that we are able to help our clients with strategic solution for their requirement. Customer Satisfaction is the hallmark by which we measure our performance and we hold ourselves as do our clients, to the highest standards of quality. In this continually evolving marketplace, our clients are more informed than ever about their solution provider options. Even so, they continue to select **EMS** as their partner of choice because of our experience, commitment to quality, community and integrity. I hope this provides you with a few reasons to get to know **EMS** better.

Sincerely,

Abdul Fattah Alwakeil

Chairman

Electro Mechanical Solutions

## About Electro Mechanical Solutions (EMS)

**EMS** is a supplier and multi-disciplinary systems integration company focused on the design, engineering, installation, consultation and service of various low current & electro mechanical systems.

Throughout **EMS** history, we have been a wellspring of innovations, creativity and technological advances.

**EMS** plans to continue its heritage of leadership in the markets we serve and, in the communities, where we live and work.

**EMS** is an authorized dealer of leading Manufacturers product lines in all Electromechanical-industries, and offering a wide range of manufactures solutions,

**EMS** provides custom-design and delivers systems tailored to best fit the client's needs.

**EMS** offers a comprehensive spectrum of product lines to offer independent and best-choice solutions for every application.

**EMS** also provides engineering support for Developers, Architects, Consultants and Contractors.



**Bandar Elbelbesi**  
**PRO**

### Mission

By providing best solution with highest quality product from the world's largest manufacturers. EMS is dedicated to provide the latest Technology, ensuring seamless integration for the clients to improve their businesses and premises; ensuring the highest quality to our customer. Our strengths are derived from our proven ability to leverage our most valuable assets our people, our technology, our capabilities and our unrelenting focus on creating value for our customers.

### Vision

To become most iconic name in the Electromechanical system integrator markets attaining high standards and professionalism

### Core Values

- ⚡ Continuous striving towards performance excellence
- ⚡ Strategic cultivation of growth opportunities
- ⚡ Unyielding commitment to our clients' needs
- ⚡ Empower our human assets by investing in their growth and development

## Our Services

**EMS** is a turnkey systems integration firm that offers a blend of the best in world-class technology paired with an unmatched certified technical team consisting of engineers, designers, programmers who are industry certified

Our Technology offering include professional Electro Mechanical, Firefighting, Data Cenetr, Low Current and System Integrator Solutions. Our Technical services include turnkey custom systems design, engineering, programming and integration offerings as well as service contract, on-going maintenance and on-site support/staffing solutions.





**Hygood FM-200®** systems are internationally accepted as providing reliable and effective fire protection solutions for high value assets, processes and locations, as well as the people who work in these protected areas.

**Hygood Sapphire™** Systems, using 3M™ Novec™ 1230 Fire Protection Fluid have emerged as the solution of choice for fire extinguishing systems to protect high value assets and processes.



**Room Integrity Test** will be performed as per project requirement and specification. Certified Engineers will lead the test



**ANSUL CO2 High Pressure Carbon Dioxide Systems** are especially effective for non-occupied Hazards such as semiconductor wet benches, control rooms and paint line



**ANSUL R-102 Fire Suppression System** products protect more food service kitchens from fire than any other brand. The R-102 Fire Suppression System incorporates a flexible design with an extremely effective ANSULEX Low pH Liquid Agent

**ANSUL Foam System** is comprised of three parts: foam concentrate, water, and air. When mixed correctly, these parts form a homogeneous foam blanket that extinguishes flames by the combined mechanisms of cooling, separating the flame source from the product surface, suppressing vapors, and smothering. This makes foam suppression systems an effective option for protecting flammable and combustible liquids. control and fire suppression system release panels provide automatic 24/7 fire protection







**TYCO wet, dry, Pre-action and Deluge water system:** A sprinkler system employing automatic sprinklers that are attached to a piping system containing water, air or nitrogen under pressure



**VIKING wet, dry, Pre-action and Deluge water system:** wet, dry, Pre-action and Deluge water system. A sprinkler system employing automatic sprinklers that are attached to a piping system containing water, air or nitrogen under pressure



**FIRETRACE** is the world leader in providing cabinet and machine level fire protection for high value and/or mission critical machinery and equipment. It works by automatically detecting and suppressing a fire where it begins directly from the source, ensuring a small fire cannot grow into a big problem. In Datacenter and IT industry, FIRETRACE will add third level named "In Cabinet" level besides the building and room fire protection levels.





A sprinkler system employing automatic sprinklers that are attached to a piping system containing water, air or nitrogen under pressure, the release of which (as from the opening of a sprinkler) permits the water pressure to open a valve known as a dry pipe valve or wet valve, and the water then flows into the piping system and out the opened or closed sprinklers.

**EMS** is distributor of water sprinkler system from different brand like Tyco, valveIT & Viking



**Upright Sprinkler**

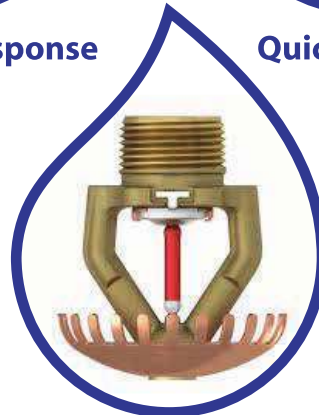


**Standard Response**



**Quick Response**

**Extended Coverage  
Sprinklers**



**Storage Sprinklers**

**VIKING®**

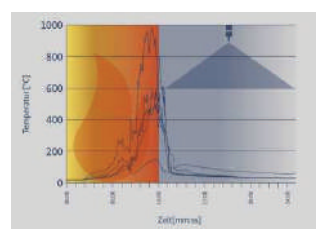
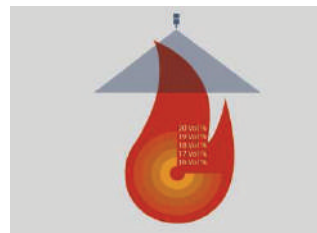
**tyco**



A team of specialists – All over the world For 20 years FOGTEC has been leading in high pressure water mist technology. Project-focused planning and our customer advisory service are based on many years of experience in the industry. A global network of over 45 system partners facilitates the integration of country-specific fire protection regulations and an optimum local on-site service at all levels. From the planning stage right through to installation and maintenance our knowledgeable experts are always on-hand. In coordination with national and local authorities and insurance companies, a 24 hour on-call service and the provision of training for end customers and system partners are also an integral part of our extensive portfolio.

## Advantages of High Pressure Water Mist

- The use of water reduces environmental damage and the hazard to personnel (no pre-warning times required).
- The minimal water consumption significantly reduces water damages.
- Less damage leads to shorter downtimes.
- An individual construction leads to special flexibility, protection of resources and efficient use of materials.
- Straightforward integration in the building thanks to a smaller system configuration (pipes and water tanks).
- High cooling effect, providing greater protection from the effects of heat for both people and materials.
- Longer life time for the system.
- No pre-warning or delay required before activation
- Extinguishing agent produces no corrosive by-products



## Tested and Approved

As part of approval procedures, research projects or user-specific test series, all systems and components undergo fire testing. Our systems are tested by inspection bodies such as the VdS, FM or TÜV and are manufactured in compliance with ISO 9001-2000 certification. FOGTEC is a founder member of the International Water Mist Association (IWMA) and a permanent member of a number of international technical committees.

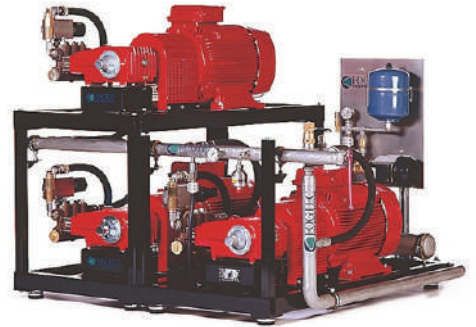


### WHY FOGTEC

- Made in Germany.
- VDS Approved Manufacture for all system Components.
- VDS & FM Approved for almost of Hazard Occupancies  
( OH1, OH3, Transformers, Data Centers, Flammable Liquids,  
Machinery Spaces, Paint Shops ).

### FOGTEC Can be used at wide variety of land applications

- Hotels
- Hospitals
- Archives
- Museums
- Libraries
- Office Buildings
- Historic Buildings
- Data Centres and server rooms
- Equipment rooms and transformers
- Cable tunnels and ducts
- Generator Plants
- Power Stations
- Machinery Spaces
- Paint Shops / Coating Lines
- Storage and production of flammable liquids
- Clean rooms and laboratories



### Tunnel System

A large number of studies have shown that major fires in tunnels can only be prevented effectively if an incipient fire is brought under control as quickly as possible, preventing its spread. The usual measures of structural fire protection or smoke extraction systems alone cannot assure this level of protection. Water mist systems significantly increase the level of safety and availability of tunnels. FOGTEC develops water mist systems to extinguish fires in tunnels across the world.

### Rail System

FOGTEC fire detection systems are used alongside FOGTEC fire fighting systems. For passenger areas in particular, water mist has proven to be the most appropriate fire fighting method. It can also be utilized in locomotives and engine rooms.

### Mobile System

Mobile FOGTEC systems are used by fire services and industrial operators. The extremely compact systems can be installed in small fire trucks, such as off-road vehicles or pick-ups, or used remotely in at risk areas.

For operations without a fire brigade, or at large companies with long path routes, mobile FOGTEC units are a proven and tested rapid intervention system.





**EMS** offer wide range of pumps and pump system from well-known manufactures.

- ⚡ Pumps and systems for HVAC, pressure boosting, water supply and sump & sewage
- ⚡ Submersible pumps for water supply from water wells, agriculture, dewatering and industrial applications.
- ⚡ Pump and pump systems for water supply, sewage disposal and sewage treatment in municipal buildings



**EMS** Offers Firefighting Pumps from **PENTAIR FAIRBANKS**. Fairbanks Nijhuis fire pumps are underwriters Laboratories Listed and Factory Manual Approved specially for fire pump services.

Split case capacities range from 250 GPM through 5000 GPM. Vertical in-line rated capacities range from 50 GPM through 1500 GPM. And vertical turbine fire pumps cover 250 GPM through 4500 GPM, all with wide range of rated pressure.

Fairbanks Nijhuis also offer vertical multistage centrifugal pumps which shall be suitable to use as Jockey Pumps

**EMS** offers Diesel Engines for firefighting pump drivers from **CLARKE**.

Clarke diesel engines are Underwriters Laboratories Listed and Factory Manual Approved specially for fire pump drivers



**Zurn** offers a broad range of **Zurn Wilkins** water control products that provide innovative solutions with the highest quality and lowest total cost of ownership for commercial, municipal, and industrial markets. Our product offering includes solutions for the plumbing, irrigation, waterworks, industrial, OEM, and fire protection markets.





## 8 Zurn Drainage Solutions

**Zurn** leads the industry with product designs that exceed performance standards and provide patented solutions to save you time and money. Choose **Zurn** and ensure your waste water is properly managed with drainage products that meet or exceed compliance standards.



**KIMMCO Insulations EMS** offers the most well know brand KIMMCO for Fiberglass and Elastomeric Rubber Insulation system. KIMMCO covers all range of insulations related to Pipes and Duct such as Pipe insulation, Rigid board insulation, insulation blankets and duct liners.



## ● Armacell Insulations

**Armacell** Elastomeric flexible rubber insulations are very well knowing product in the market for mechanical pipe and duct insulation system. Product focus is on insulation solutions enhancing the energy efficiency of technical equipment, high-performance foams for sophisticated and lightweight applications, 100 percent recycled PET products and next-generation aerogel-based insulation technology.



**EMS** Provides complete fitting system for Copper press fittings & Stainless steel Press and Grooved fittings which is one of the fastest, safest, and smartest pipe – joining solutions available. Piping system installation can be completed in a matter of seconds which reduce the time constraints and budget

#### Features & Benefits:

- ⚡ Connection can be made wet or dry for quick repairs on existing systems
- ⚡ No need for burn permits or fire watches
- ⚡ Make sure press connection in less than seven seconds
- ⚡ Flameless press technology eliminating sweating, brazing & grooving
- ⚡ Reliable Zero Lead solution with inherently lead-free material



## 11 Multilayer PEX Pipes and fittings

**EMS** Provide Multilayer pipe systems have just taken a great leap forward with the arrival of the Viega Smartpress. The flexible pipe can be quickly and easily prepared straight off the coil enabling connection work to be efficiently conducted 'on the floor' and – with large dimensions up to 63 mm – they are perfectly suited for use in riser and distribution pipes.





A valve is a device that regulates, directs or controls the flow of a fluid (gases, liquids, fluidized solids, or slurries) by opening, closing, or partially obstructing various passageways. Valves have many uses, including controlling water for irrigation, industrial uses for controlling processes, residential uses such as on/off and pressure control to dish and clothes washers and taps in the home.. In compressed air systems, however, valves are used with the most common type being ball valves.

Paired with industry giants, EMS delivers a complete range of valves. Products line include general valves, butterfly valves, gate valves, ball valves, check valves & diesel valves



Motorized control valves allow for flow to be stopped, started, and adjusted as necessary to ensure that operations continue as scheduled. Motorized control valves work to control flow by either opening or closing an opening within a pipeline. EMS provides a comprehensive motorized valves solution.





With a dedicated team of data centre professionals, **EMS** is at the forefront of data centre design and development. In the ever-evolving world of big data and cloud computing, we stand ready to help our clients scale their data centre operations and IT infrastructure together with their business expansion. **EMS** Team of specialists provides design, construction, and maintenance for Datacenter Facilities. Using international industry standards and recommendations, **EMS** ensures this critical part of its service conforms with clients' requirements and core business activities. We can customize data center designs that have proven best practice as well as those that meet the Uptime Institute standards, tailoring solutions based on the end user requirements in order to optimize the CAPEX, reduce risk and improve reliability. We are extensively involved in the renovation and upgrade of existing data centers as well as the design of new datacenter facilities. Our turnkey datacenter solutions are designed to satisfy the diverse IT requirements of small, medium and large enterprises.



٧٠٠١٨٥٤.٥٣  
٤٠٣.٢٦٨٨٥٠  
١٤٣٥/٠٦/١٣

الرقم:  
التاريخ:

وزارة التجارة والاستثمار  
Ministry of Commerce and Investment

رؤية 2030  
المملكة العربية السعودية  
KINGDOM OF SAUDI ARABIA

شهادة تسجيل شركة

الاسم التجاري للشركة: شركة المنشأ المباشر للحلول الهندسية للاتصالات وتقنية المعلومات  
نوعها: ذات مسئولية محدودة  
مده الشركة: ٢٠ سنة  
مركزها الرئيسي: جدة / حي الشرفية / طريق المدينة / شارع أبي بكر الصديق / مركز الخليج  
ص ب: ٥٠١٨٤ الرمز البريدي: ٢١٥٢٣ هاتف: ٦٠٧١٣٦٩ فاكس: ٦٠٣١٠٦٩  
النشاط: تجارة الجملة والتجزئة في الأجهزة الإلكترونية والكهربائية والسلكية والأسلاكية الصوتية السمعية المرئية شاشات الكرتون وشاشات العرض والأثاث المنزلي والمكتبي والكهربي والإلكتروني والتقني وقطع غيارها والحاسبات وقطع غيارها وأجهزة التلفزيونات الثابتة والمحمولة المقاسم والاتصالات وأكسسواراتها وخدشات الحاسب الآلي وإبرامج الحاسب الآلي

رأس المال: ١٥٠٠٠٠ ريال سعودي  
المديرون: ١. تسرين يوسف اسماعيل النليسي ٢. ٣. ٤. ٥. ٦. ٧. ٨. ٩. ١٠. ١١.

سلطات المدير والمديرون: حسب ما نص عليه عقد الشركة

يشهد مكتب السجل التجاري بمدينة: جدة بأنه تم تسجيل الشركة المذكورة أعلاه بمدينة: جدة وتاريخ: ١٤٣٥/٠٦/٠٨  
وتنتهي صلاحية الشهادة في: ١٤٤٤/٠٦/١٣ بموجب رقم: ٢١١٣٣  
الختم التوقيع: مدير السجل التجاري للشركات: عبد الرحمن بن إبراهيم الحماد

٧٠٠٢٥٦.٩٣١  
٤٠٣.٦٠٥٣٣١  
١٤٣٩/٠٦/٠٢

الرقم:  
التاريخ:

وزارة التجارة والاستثمار  
Ministry of Commerce and Investment

رؤية 2030  
المملكة العربية السعودية  
KINGDOM OF SAUDI ARABIA

شهادة تسجيل فرع شركة

اسم الشركة: شركة المنشأ المباشر للحلول الهندسية للاتصالات وتقنية المعلومات  
نوعها: ذات مسئولية محدودة  
مركزها الرئيسي: جدة / حي الشرفية / طريق المدينة / شارع أبي بكر الصديق / مركز الخليج  
ص ب: ٥٠١٨٤ الرمز البريدي: ٢١٥٢٣ هاتف: ٦٠٧١٣٦٩ فاكس: ٦٠٣١٠٦٩  
رقم سجل المركز الرئيسي: ٤٠٣.٢٦٨٨٥٠ تاريخه: ١٤٣٥/٠٦/١٣ مصدرة: جدة

الاسم التجاري: فرع شركة المنشأ المباشر للحلول الهندسية للاتصالات وتقنية المعلومات  
العنوان: جدة حي الروضة طريق المدينة النازل مركز الخرجي  
ص ب: ٥٣٤٤٧ الرمز البريدي: ٢١٣٥٤ هاتف: ٦٦٤٠٠٥٤ فاكس: ٦٦٤٠٠٨٢

النشاط: استيراد وبيع وتركيب وصيانة الأجهزة الأمنية (أجهزة بوابات الدخول والخروج بالبطاقات المغنطية والبصمة وأجهزة تفتيش الحقائب والطرود وأجهزة وأنظمة الإنذار ضد الشرفة وأجهزة وبوابات الكشف عن المعادن والمتفجرات وأنظمة الدوائر التلفزيونية المغلقة وكاميرات المراقبة بموجب خطاب الهيئة العليا للأمن الصناعي رقم ٢٩٤٣٢٤

اسم المدير (رئيس): بندر يوسف اسماعيل النليسي  
الجنسية: سعودي  
رقم السجل المدني: ١٠٠٦٤٣٣١٩٥  
سلطات المدير: حسب ما نص عليه عقد الشركة  
يشهد مكتب السجل التجاري بمدينة: جدة بأنه تم تسجيل فرع الشركة المذكورة أعلاه بمدينة: جدة وتاريخ: ١٤٣٩/٠٦/٠٢  
وتنتهي صلاحية الشهادة في: ١٤٤٤/٠٦/٠٢ بموجب الإيصال رقم: ٩١١١٣٠٠ وتاريخ: ١٤٣٩/٠٦/٠٢

الختم التوقيع: مدير السجل التجاري للشركات: عبد الرحمن بن إبراهيم الحماد



٧٠٠٩٣٤٥٠٥٤  
الرقم: ٤٠٣٠٤٠٠٨٧٢  
التاريخ: ١٤٤٢/٠٤/٢٥



وزارة التجارة  
Ministry of Commerce

VISION رؤية  
2030  
الهيئة العامة للغذاء والدواء  
SAGRA  
REGION OF SAUDI ARABIA

**شهادة تسجيل فرع الشركة**

<p>اسم الشركة: شركة المنشأ المباشر للحلول الهندسية للاتصالات وتقنية المعلومات</p> <p>نوعها: ذات مسؤولية محدودة</p> <p>مركزها الرئيسي: جدة / حي الشرفية / طريق المدينة / شارع أبي بكر الصديق / مركز الخليج</p> <p>ص ب: _____</p> <p>رقم سجل المركز الرئيسي: ٤٠٣٠٢٦٨٨٥٠</p> <p>الاسم التجاري: شركة المنشأ المباشر للحلول الهندسية للاتصالات وتقنية المعلومات</p> <p>الصف: ٢١٧٧</p> <p>ص ب: _____</p> <p>النشاط: تركيب وصيانة أجهزة ومعدات الإذاعة من الحريق، تركيب وصيانة أجهزة ومعدات الإطفاء</p>	<p>اسم المدير (رئيساً): بندر يوسف البليسي</p> <p>الجنس: سعودي</p> <p>رقم السجل المدني: ١٠٠٦٤٣٣١٩٥</p> <p>سلطات المدير: حسب ما نص عليه عقد الشركة</p> <p>يشهد مكتب السجل التجاري بمدينة: جدة</p> <p>وتنتهي صلاحية الشهادة في: ١٤٤٥/٠٤/٢٥</p> <p>مدير السجل التجاري للشركات: عبد المحسن بن إبراهيم الحماد</p> <p>التوقيع: _____</p>
--	---

To verify the information of this certificate visit <http://v.mci.gov.sa> على



٤٠٣٠٦٠٥٣١٩  
الرقم: ١٤٣٩/٠٦/٠٢  
التاريخ:



وزارة التجارة  
Ministry of Commerce

VISION رؤية  
2030  
الهيئة العامة للغذاء والدواء  
SAGRA  
KINGDOM OF SAUDI ARABIA

**شهادة تسجيل الشركة**

<p>الرقم الموحد للمنشأة: ٧٠٠٢٥٦٠٦٣٤</p> <p>نوعها: ذات مسؤولية محدودة مختلطة</p> <p>مدة الشركة: ٢٥ سنة</p> <p>مركزها الرئيسي: ٧٤٩٣، طريق المدينة التنازل مبنى الخريجي، الروضة، ٣٤٢٨</p> <p>ص ب: ٥٣٤٩٧</p> <p>النشاط: للاطلاع على بيانات الأنشطة الرجاء مسح الرمز التجاري</p> <p>رأس المال: ١٥٠٠٠٠ ريال سعودي</p>	<p>اسم الشركة: شركة المنشأ المباشر للتجارة</p> <p>جنسيتها: جنسيتها مختلطة</p> <p>وتنتهي في: ١٤٤٣/٠٧/١٠</p> <p>تبدأ من: ١٤٤٣/٠٧/١٠</p> <p>هاتف: ١٢٣٣٥٢٣٥٠</p>
---	--

<p>٢. تسيرين يوسف اسماعيل البليسي</p> <p>٤. _____</p> <p>٦. _____</p> <p>٨. _____</p> <p>١٠. _____</p> <p>١٢. _____</p> <p>١٤. _____</p> <p>١٦. _____</p> <p>١٨. _____</p>	<p>١. عبدالفتاح مكاوي عبدالفتاح الوكيل</p> <p>٣. فهد سالم صالح عوض العامري</p> <p>٥. _____</p> <p>٧. _____</p> <p>٩. _____</p> <p>١١. _____</p> <p>١٣. _____</p> <p>١٥. _____</p> <p>١٧. _____</p>
--	--

سلطات المدير/المديرين: حسب ما نص عليه عقد الشركة

يشهد مكتب السجل التجاري بمدينة: جدة

وتنتهي صلاحية الشهادة في: ١٤٤٦/٠٦/٠٢

بأنه تم تسجيل الشركة المذكورة أعلاه بمدينة: جدة

بموجب الإقبال رقم: ١٨٦٠٢٥٠ وتاريخ: ١٤٤٣/١١/٠٧

مدير السجل التجاري للشركات: عبد المحسن بن إبراهيم الحماد

التوقيع: \_\_\_\_\_

To Verify the information of this certificate visit <http://v.mci.gov.sa> على





**رخصة مزاولة نشاط**

المملكة العربية السعودية  
وزارة الداخلية  
الهيئة العامة للأمن الصناعي  
إدارة التراخيص الأمنية المركزية

رؤية  
**2030**  
المملكة العربية السعودية  
KINGDOM OF SAUDI ARABIA

رقم الرخصة: ٧٥٩٩٣٠٠٢٥١٠٠

شركة المنشأ المباشر للتجارة			
الإسم التجاري		٤٠٣٠٦٠٥٣١٩	
رقم السجل التجاري		٧٠٠٢٥٦٠٦٣٤	
تاريخ الإصدار	١٤٤٤-٠٦-٠١	تاريخ الانتهاء	١٤٤٧-٠٦-٠١
النشاط المرخص		البيع بالجملة لأجهزة ومعدات ومواد الوقاية والحماية من الحريق	
الأجهزة والمعدات			

تشهد إدارة التراخيص الأمنية المركزية بأن المنشأة الموضحة أعلاه قد استوفت كافة الإجراءات والاشتراطات النظامية لمزاولة النشاط الموضح أعلاه وقد أصدرت لها هذه الرخصة كمنشأة مصرح لها لمزاولة النشاط المذكور

أمين عام الهيئة العامة للأمن الصناعي



عقيد مهناش / عدل بن زايد العتيبي





\* للتأكد من صلاحية الرخصة الرجاء الدخول على منصة الهيئة العامة للأمن الصناعي: <https://hais.gov.sa>  
\* يتطلب وجود النشاط في السجل التجاري المذكور أعلاه، على أن يكون السجل التجاري ساري المفعول



**رخصة مزاولة نشاط**

المملكة العربية السعودية  
وزارة الداخلية  
الهيئة العامة للأمن الصناعي  
وحدة التراخيص الأمنية المركزية

رؤية  
**2030**  
المملكة العربية السعودية  
KINGDOM OF SAUDI ARABIA

رقم الرخصة: ٢٠٠٢١٠٤١٢٢٠

شركة المنشأ المباشر للحلول الهندسية للاتصالات وتقنية المعلومات			
الإسم التجاري		٤٠٣٠٤٠٠٨٧٢	
رقم السجل التجاري		٧٠٠٩٣٤٥٠٥٤	
تاريخ الإصدار	١٤٤٢-٠٥-١٢	تاريخ الانتهاء	١٤٤٥-٠٥-١٢
النشاط المرخص		تركيب وصيانة أجهزة ومعدات الإطفاء	

تشهد وحدة التراخيص الأمنية المركزية بأن المنشأة الموضحة أعلاه قد استوفت كافة الإجراءات والاشتراطات النظامية لمزاولة النشاط الموضح أعلاه وقد أصدرت لها هذه الرخصة كمنشأة مصرح لها لمزاولة النشاط المذكور.





\* للتأكد من صلاحية الرخصة الرجاء الدخول على موقع وحدة التراخيص الأمنية المركزية: [www.clu-moi.com.sa](http://www.clu-moi.com.sa)  
\* يتطلب وجود النشاط في السجل التجاري المذكور أعلاه، على أن يكون السجل التجاري ساري المفعول





رؤية 2030  
المملكة العربية السعودية  
KINGDOM OF SAUDI ARABIA



وزارة الداخلية  
الهيئة العامة للأمن الصناعي  
الأمارة العامة  
وحدة التراخيص الأمنية المركزية

## رخصة مزاولة نشاط

رقم الرخصة: 19510006030

الإسم التجاري	شركة المنشأ المباشر للحلول الهندسية للاتصالات وتقنية المعلومات		
رقم السجل التجاري	4030605319	منطقة مزاولة النشاط	جدة
تاريخ الإصدار	1440-07-22	تاريخ الانتهاء	1443-07-22
النشاط المرخص	البيع بالجملة لأجهزة ومعدات ومواد الوقاية والحماية من الحريق		

تشهد وحدة التراخيص الأمنية المركزية بأن المنشأة الموضحة أعلاه قد استوفت كافة الإجراءات والإشترطات النظامية لمزاولة النشاط الموضح أعلاه وقد أصدرت لها هذه الرخصة كمنشأة مصرح لها لمزاولة النشاط المذكور.



\* للتحقق من صلاحية الرخصة الرجاء الدخول على موقع وحدة التراخيص الأمنية المركزية [www.clti-moi.com.sa](http://www.clti-moi.com.sa)

\* يتطلب وجود النشاط في السجل التجاري المذكور أعلاه على أن يكون السجل التجاري ساري المفعول





رؤية 2030  
المملكة العربية السعودية  
KINGDOM OF SAUDI ARABIA



وزارة الداخلية  
الهيئة العامة للأمن الصناعي  
الأمارة العامة  
وحدة التراخيص الأمنية المركزية

## رخصة مزاولة نشاط

رقم الرخصة: 19504006186

الإسم التجاري	فرع شركة المنشأ المباشر للحلول الهندسية للاتصالات وتقنية المعلومات		
رقم السجل التجاري	4030605331	منطقة مزاولة النشاط	جدة
تاريخ الإصدار	1440-07-22	تاريخ الانتهاء	1443-07-22
النشاط المرخص	البيع بالجملة لأجهزة الأمنية		
الأجهزة والمعدات	كاميرات المراقبة الأمنية , أنظمة الدوائر التلفزيونية المغلقة , أجهزة وأنظمة الإنذار ضد السرقة , أجهزة وبوابات الكشف عن المعادن , أجهزة تفتيش الحفائب والطبوع , أجهزة بوابات الدخول والخروج بالبطاقات الممغنطة والبصمة , السياج الأمني		

تشهد وحدة التراخيص الأمنية المركزية بأن المنشأة الموضحة أعلاه قد استوفت كافة الإجراءات والإشترطات النظامية لمزاولة النشاط الموضح أعلاه وقد أصدرت لها هذه الرخصة كمنشأة مصرح لها لمزاولة النشاط المذكور.



\* للتحقق من صلاحية الرخصة الرجاء الدخول على موقع وحدة التراخيص الأمنية المركزية [www.clti-moi.com.sa](http://www.clti-moi.com.sa)

\* يتطلب وجود النشاط في السجل التجاري المذكور أعلاه على أن يكون السجل التجاري ساري المفعول





## Elite Clients



أرامكو السعودية  
Saudi Aramco



مجموعة بن لادن السعودية  
SAUDI BINLADIN GROUP



مصرف الإنماء  
alinma bank



الجامعة العربية المفتوحة  
Arab Open University



جامعة تبوك  
University of Tabuk



بترو رابغ  
Petro Rabigh



GENERAL  
DYNAMICS



د. سليمان الحبيب  
DR SULAIMAN AL HABIB



مسك  
مؤسسة محمد بن سلمان  
Mohammed Bin Salman  
Foundation



نيوم  
NEOM



هيئة الزكاة والضريبة والجمارك  
Zakat, Tax and Customs Authority



## Our Partners

### ● Firefighting System

**tyco**



**Reliable**  
TECHNOLOGY • QUALITY • SERVICE

**VIKING**

**ANSUL**  
*Innovative Fire Solutions*

**PENTAIR**  
FAIRBANKS NIJHUIS®

**GIACOMINI**  
WATER E-MOTION

**VAL'MATIC**



**FOGTEC**  
FIRE PROTECTION

### ● Plumbing / HVAC System

**ZURN**

**"Apollo" Valves**

**viega**

**KIMMCO**  
means insulation!

**vahn-tech**  
international inc.

**KSB**

**WILO**

**Danfoss**

**Frese**

**EBARA**

**AYVAZ**

**armacell**  
MAKING A DIFFERENCE AROUND THE WORLD

**valvelT**  
APPROVED INTERNATIONAL SENSORIZED SOLUTIONS

# Our Projects

## DGDA Project

Diriyah Gate Development Authority Project, Renewed as Saudi Arabia's cultural capital, the historic city of Diriyah will showcase Saudi Arabia's 300+ years of authentic culture and history by delivering one-of-a-kind inspiring heritage experiences, educational and cultural opportunities, world-class residential living, and outstanding lifestyle offerings to include shopping, entertainment, and dining experiences

- Supply of Drainage Accessories & Plumbing Specialties



## Qiddiya Projects

Qiddiya, a Public Investment Fund project, is set to become the capital of Entertainment, Sports and Arts. It will be a disruptive destination that offers innovative, immersive, and unparalleled experiences, all integrated on a scale never been seen before.

- Supply of Drainage Accessories & Plumbing Specialties
- Supply of Sprinkler Heads & Valves



## King Salman Project

A Great Vision from the Government that Developing a green oasis that will act as the city's green lung, where a stretch of land larger than 16 km will be covered with nature. Becoming a destination that will enrich the social setting in Riyadh and bring the community together

- Supply of Drainage Accessories & Plumbing Specialties





# Our Projects

## Riyadh Avenue Mall Project

The Avenues Riyadh mixed-use project will extend across 390,000 square meters, located at a prime position. The Avenues Riyadh is blended use improvement which will be built on a site square meters in region. The Avenues, will include one of the world's largest malls, as well as five multi-purpose towers consisting of hotels, exhibitions, conference halls, residential apartments, offices and medical facilities.

- Supply Drainage Accessories and Plumbing Specialties
- Supply of Sprinkler Heads & Valves



## Red Sea Projects

The project sits over 28,000 km<sup>2</sup> of pristine lands and waters and includes a vast archipelago of more than 90 islands and will set new standards in regenerative tourism and sustainable development, creating unique travel experiences and unforgettable memories. With sustainability at its core, supporting infrastructure emphasizes renewable energy and water conservation and re-use. Unlocking new opportunities in the Kingdom's tourism sector, establishing a world-class resort that attracts domestic and international tourists to experience Saudi Arabia's untapped riches.

- Supply and installation of NOVEC System
- Supply of firefighting Valves and Sprinklers
- Supply of plumbing specialties
- Supply of Pumps (Chilled water and firefighting)



## Riyadh Township Project

ROSHN, a national community developer and Public Investment Fund project, is focused on contributing to the demands for increased homeownership across Saudi Arabia. Chaired by His Royal Highness Prince Mohammad bin Salman bin Abdulaziz Al Saud, Crown Prince, Deputy Prime Minister and Chairman of Council of Economic Development Affairs, ROSHN aims to increase the rate of homeownership to 70% within the next 10 years.

- Supply Drainage Accessories and Plumbing Specialties
- Supply of Sprinkler Heads & Valves
- Supply of Water Pumps



# Our Projects

## Neom Projects

NEOM is a bold and audacious dream of a New Future, an accelerator of human progress that will embody the future of innovation in business, livability and sustainability. NEOM is one of the Public Investment Fund's projects. It will be a destination; a home for people who dream big and want to be part of building a new model for sustainable and prosperous living. The NEOM project aims to achieve exceptional livability, thriving businesses and reinventing conservation, in line with Saudi Vision 2030

- Supply and installation of NOVEC System
- Supply of firefighting Valves and Sprinklers
- Supply of plumbing specialties
- Supply of Pumps (Chilled water and firefighting)



NEOM نيوم

## SEVEN Entertainment Ventures

Saudi Entertainment Ventures "SEVEN" is the execution and investment arm of the Public Investment Fund "PIF" of Saudi Arabia in the entertainment sector. SEVEN seeks to enhance the quality of life of Saudi nationals and residents and meet their recreational expectations and needs with a wide number of entertainment projects throughout major cities in Saudi Arabia like Riyadh, Dammam, Jeddah, Madinah, Yanbu, Tabuk & Abha that are planned to take place in the next 8 years

- Supply Drainage Accessories and Plumbing Specialties
- Supply of Firefighting Pumps
- Supply of Sprinkler Heads & Valves
- Supply and installation of NOVEC System







### King Abdulaziz International Airport (KAIA)

**King Abdulaziz International Airport** is the most important one in the Kingdom, being the gateway for Hajj and Umrah pilgrims to the Holy Mosque in Makkah. It is also home to the world's fourth largest terminal in the world: the Hajj terminal, a whopping 510,000 square meters in size.

- ⚡ Design, Supply and Installation of Fire Suppression System (FM200)
- ⚡ Supply of Electric Water
- ⚡ Supply of Submersible Pump
- ⚡ Design, Supply and Installation of Foam Transferring System
- ⚡ Supply of Fire Extinguisher
- ⚡ Supply of Sprinkler / Fire Fighting Valve/ Plumbing Valve
- ⚡ Supply of Fire Curtain
- ⚡ Supply of Generator
- ⚡ Supply of Sensors



### Makkah Clock Tower

At the heart of the holiest Islamic city, **Makkah Royal Clock Tower** brings an air of modernization to the bustling historic center of Mecca. The tower was developed as a component of the King Abdulaziz Endowment Project and provides comfortable accommodations for devout Muslims that make the journey to the city every year during the Hajj period. It is conveniently located adjacent to the Grand Mosque, which can accommodate up to two million worshippers over the course of the event.

- ⚡ Design, Supply and Installation of Fire Suppression System (FM200)
- ⚡ Design, Supply and Installation of Fire Trace
- ⚡ Design, Supply and Installation of CRAC system
- ⚡ Design, Supply and Installation UPS System





### **King Abdulah Bin Abdul-Aziz Project (KAP 05):**

The project includes the Design Review, Project Management and Construction Supervision of 370 sites comprising residential buildings, administrative offices, traffic divisions, police stations, drug control units, civil defense centers etc. to be built all over the Kingdom of Saudi Arabia.

- ⚡ Design, Supply and Installation of Fire Suppression System (NOVEC)
- ⚡ Supply of Sprinkler System



### **King Abdullah Financial District (KAFFD)**

**The King Abdullah Financial District (KAFFD)** is a new development under construction near King Fahad Road in the Al Aqeeq area of Riyadh, Saudi Arabia being undertaken by the Riyadh Investment Corporation on behalf of the Pension Authority of the Kingdom of Saudi Arabia. The project consists of 59 towers in an area of 1.6 million square meters. It will provide more than 3 million square meters of space for various uses, 62,000 parking spaces and accommodation for 12,000 residents. Upon completion, KAFFD is expected to host around 50,000 residents.

- ⚡ Supply of Sprinkler System
- ⚡ Design, Supply and Installation of Fire Suppression System (FM200)
- ⚡ Design, Supply and Installation of Fire Suppression System (NOVEC)



### Shamiya-Haram Extension

The mosque underwent a fourth extension project. **King Abdullah Ibn Abdulaziz** planned to increase the mosque's capacity to 2 million. The expansion will include the addition of a new seven story building with 74 prayer halls, an ornate prayer hall spread over 250,000 square meters and a 5000-square meter of central ceremonial area.

- ⚡ Design, Supply and Installation of Fire Suppression System (NOVEC)
- ⚡ Supply of Sprinkler System
- ⚡ Supply of SS press System



### Haramain High Speed Railway (HHR)

**The Haramain high-speed railway** (Haramain referring to Mecca and Medina, the two Islamic holy cities linked by it), also known as the Western railway or Mecca–Medina high-speed railway, is a 453-kilometre-long (281 mi) high-speed rail line in Saudi Arabia. The railway is expected to carry 60 million passengers a year, including around 3-4 million Hajj and Umrah pilgrims, helping to relieve traffic congestion on the roads.

- ⚡ Design, Supply and Installation of Fire Suppression System (FM200)
- ⚡ Design, Supply and Installation of Foam System
- ⚡ Supply of Sprinkler System





### King Faisal Specialist Hospital (KFSH)

The establishment of **King Faisal Specialist Hospital KFSH** is considered one of the most important health projects that the Eastern region has had in the past few years. Despite the fact that it's a new hospital; it still found its way through quick steps towards accomplishing a lot in the quality and quantity of specialist medical services provided for the families in the Eastern Region.

- ⚡ Design, Supply and Installation of Foam System
- ⚡ Supply of Sprinkler System



### Ministry of Health (MOH):

Since the modern state of Saudi Arabia was first founded the public health and disease control were among the government's top priorities. Eventually, it was necessary to create a large-scaled specialized organization to carry out the Kingdom's health affairs. Health-care services in Saudi Arabia are provided by several public and private agencies. However, the ministry is the major planner and provider of these services

- ⚡ Design, Supply and Installation of Fire Suppression System (NOVEC)
- ⚡ Design, Supply and Installation of Fire Suppression System (FM200)
- ⚡ Supply of Sprinkler Valve





### Saudi Cargo

Saudi Airlines Cargo is a leading cargo carrier based in Saudi Arabia with global reach. Saudi Cargo provides multi-specialized cargo handling as it operates a fleet of 10 freighter aircraft to 13 cargo destinations as well as over 58 belly international destinations across 6 continents. Supply of Sprinkler Valve

⚡ Supply of Fire Extinguisher



### Al Faisliyah Project

**The Al Faisaliyah Centre** (or Al Faisaliah Centre, Arabic: برج الفيصلية) is a commercial skyscraper located in the business district of Riyadh, Saudi Arabia. It was the first skyscraper built in Saudi Arabia, and is presently the fourth tallest building in Saudi Arabia after the Kingdom Centre, Burj Rafal and Abraj Al Bait. It is also called Star Dome.

- ⚡ Design, Supply and Installation of Fire Suppression System (NOVEC)
- ⚡ Design, Supply and Installation of Fire Suppression System (FM200)
- ⚡ Supply of Sprinkler
- ⚡ Supply Plumbing valve
- ⚡ Supply of Fire Fighting Valve



### Sharma Complex Tabuk

Sharma project is deemed one of the projects implemented by Tabouk Investment and Tourism Company. It is the first pioneer resorts on the northern Red Sea coast exactly "Ainoona" gulf distinguished by its singularity as a virgin maritime environment with its fascinating beaches and round the year moderate weather. The geography of the place reflects an environmental variations represented in the mountainous chains, the sandy beaches as well as the botany maritime environment.

⚡ Supply of Sprinkler/Valves



### Princess Nourah Bint Abdul Rahman University (PNU)

**Bint Abdulrahman University (PNU; Arabic: جامعة الأميرة نورة بنت عبد الرحمن)** is a public women's university located in Riyadh, the capital of Saudi Arabia. It is the largest women's university in the world. The university was founded in 1970 as the first College of Education for women in the Kingdom, it has innovative design and technology, and all while keeping in mind the complex characteristics of the Saudi culture.

⚡ Supply of fire Alarm Material

⚡ Supply of Sprinkler/ Valves



### Kingdom Tower Riyadh

**Kingdom Centre (Arabic: مركز المملكة)** is a 99-storey, 302.3 m (992 ft.) skyscraper in Riyadh, Saudi Arabia, it overtook the 267-meter Faisaliyah Tower as the tallest tower in Saudi Arabia. Kingdom Tower is regarded as a unique landmark in Saudi Arabia with incomparable world-class attractions and an unprecedented selection of the finest local and international retailers. It presents a premium shopping experience where its exceptional mall hosts a variety of international brands and presents a new and rewarding shopping experience with a unique plethora of options.

- ⚡ Design, Supply and Installation of Fire Suppression System (FM200)
- ⚡ Supply of Sprinkler



### Ministry of Defense (MOD)

**The Ministry of Defense (Arabic: وزارة الدفاع)** is a ministry in Saudi Arabia that is responsible for the protection of the national security, interests and sovereignty of the country from the external threats as well as the working with all ministries of the state to achieve national security and stability

- ⚡ Design, Supply and Installation of UPS System





### Metro Jeddah

**Metro Jeddah Company (MJC)** was set up as developer and asset owner of the Jeddah Public Transportation Program (JPTP). Company vision is to provide a world-class integrated public transportation system to the city of Jeddah while enhance resident s mobility in a safe, sustainable and efficient fashion and contribute towards the growth of Jeddah as a globally recognized tourist and commercial destination, and gateway to the two holy Cities of Makkah and Medina.

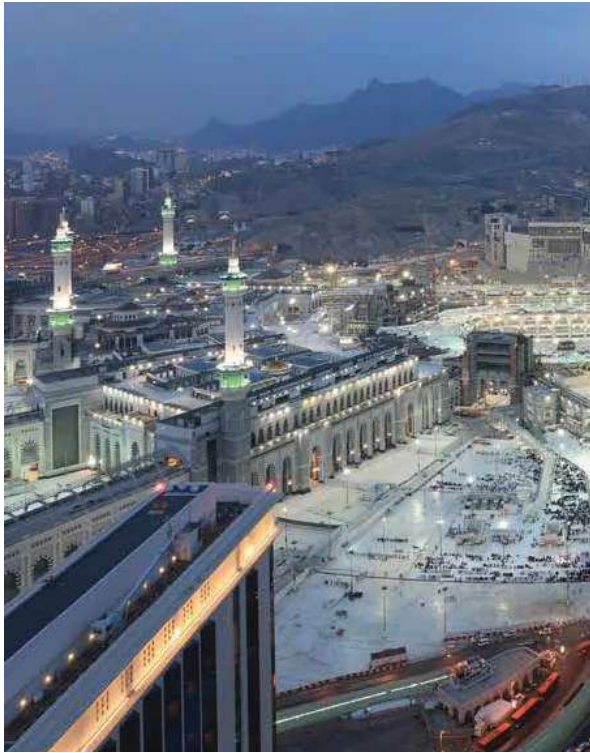
⚡ Preventive Maintenance of Data Center (CRAC, UPS & Fire Fighting System)



### Riyadh Depot

The project involves the construction of a 45 km double track line from Al-Madinah Al Munawwarah Road to Rahman Al Awal Road. The track is mostly superelevated with 4 km of underground line. There are a total of 22 stations and two train maintenance depots, West and East Depots and a multi- level parking facilities for users: 5 – 114,000 m2.

⚡ Design, Supply and Installation of Fire Suppression System (FM200)



### Jabal Omar Development Projects (JODP)

The project is composed of 40 towers situated on top of 16 structural bases with a total built-up area of approximately two million square meters. The project houses an array of hotels, apartments, residential units, and malls.

- ⚡ Plumbing & Drainage Accessories with Complete water Solutions
- ⚡ Kitchen Hood Fire Suppuration System
- ⚡ Grooved Fittings



### Ministry Of Housing (MOH)

100,000 homes planned for Saudi citizens by 2020

- ⚡ The ministry has announced its goals for 2020, including providing 100,000 new housing units in partnership with real estate developers at a total value of SR65 billion.
- ⚡ Plumbing & Drainage Accessories with Complete water Solutions

### Ministry Of Higher Education (MOHE)

Number of contracts pertaining to new projects at the universities of Taif, Jazan, Ha'il, Tabuk, Prince Salman ibn Abdulaziz and Al Majmaah with a total cost reaching 2,594,813,355 Saudi Riyals

- ⚡ Supplying Plumbing & Drainage Accessories (Floor Drain, Cleanout, Roof Drain, PRV, Backflow Preventer, Oil & Grease Interceptors) and Preventive Maintenance of data Center (CRAC, UPS & Fire Fighting Systems.)



### Royal Commission Development Projects (Jubail, Yanbu, Ras Al-Khair & Jazan)

The mission of the RCJY is to: "Plan, promote, develop and manage Petrochemicals and Energy intensive industrial cities through successful customer focus and partnerships with investors, employees, communities and other stakeholders." These industrial cities are Jubail, Yanbu, Ras Al-Khair and the newest project Jazan

- ⚡ Supplying Plumbing & Drainage Accessories (Floor Drain, Cleanout, Roof Drain, PRV, Backflow Preventer, Oil & Grease Interceptors) and Preventive Maintenance of data Center (CRAC, UPS & Fire Fighting) Systems.







+(966)12 2352350



+(966) 12 2352350



[www.ems-ksa.com](http://www.ems-ksa.com)



[Info@ems-ksa.com](mailto:Info@ems-ksa.com)



SCAN TO FIND MORE



#### **Jeddah Office 1**

Jeddah , Madinah Road,  
Beside Le Meridien ,  
Kherigi Business Center,  
4th Floor , Office 4001

#### **Riyadh Office**

60 Street,  
Salah Ad Din Al Ayyubi,  
Al Akaria Building,  
Tower No 1,  
7th Floor,  
Office No 7102,  
P.O. Box: 2305 Riyadh 12812,  
Kingdom of Saudi Arabia, Riyadh.

#### **Jeddah Office 2**

Gulf Center, 4th Floor  
P.O. Box 53447 Jeddah  
21354 Saudi Arabia

#### **Egypt Office**

13 Tayran street,  
Nasr city, Cairo, Egypt